

Using TWAIN in Photoshop CS5 (PC)

Hints:

To check whether your system is 32-bit or 64-bit, do the following:

Windows Vista/Windows 7

Click **Start**, then right-click **Computer**. From the pull-down menu, click **Properties**. You will see the **System Type** listed.

Windows XP

Click **Start**, then right-click **My Computer**. From the pull-down menu, click **Properties**. If you see "**x64 Edition**" listed, then you're running the 64-bit version of Windows XP. If not, you are running the 32-bit version instead.

For 32-bit Windows user with Photoshop CS5

Download the Photoshop CS5 Optional plug-ins from:

<http://www.adobe.com/support/downloads/detail.jsp?ftpID=4688>

Installation Instructions:

Unzip the downloaded file, and copy "Twain_32.8BA" file to the //Adobe Photoshop CS5/Plug-ins/Import-Export folder. Restart Photoshop to enable the plug-in.

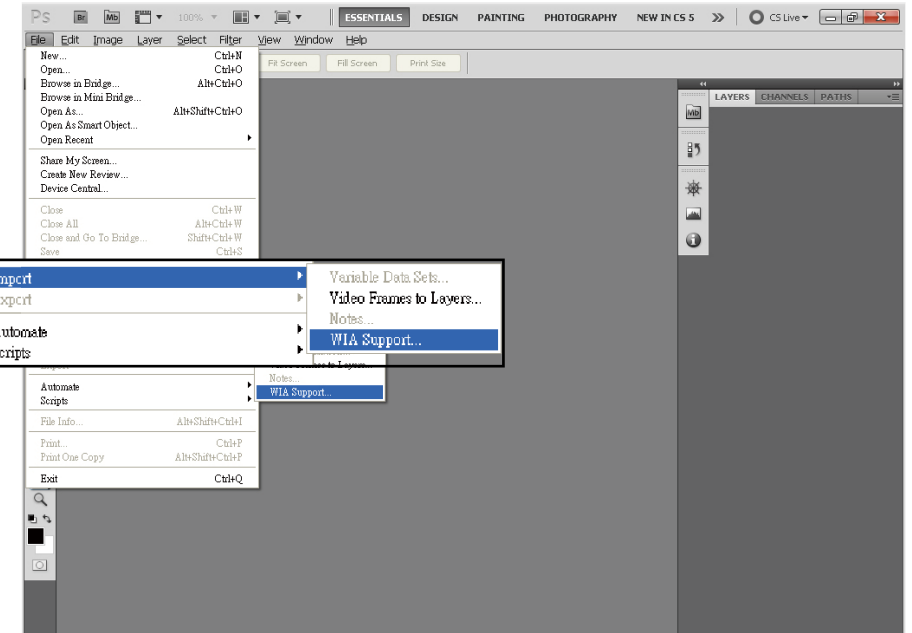
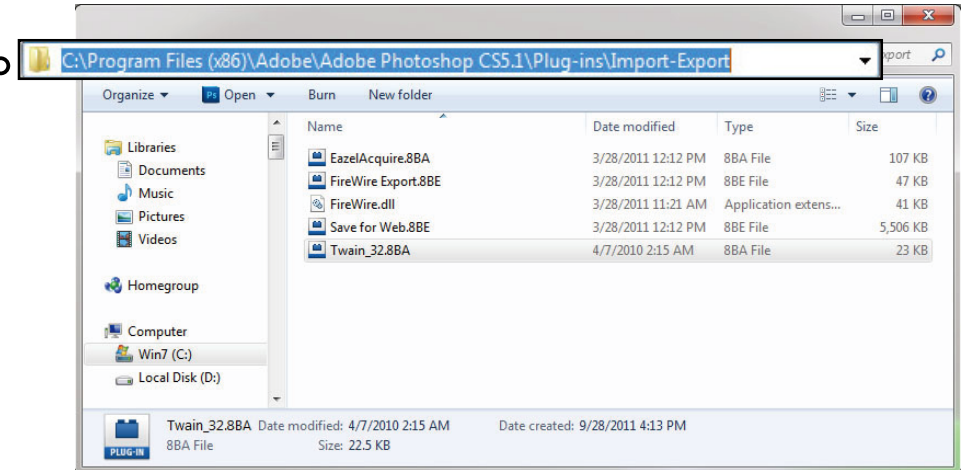
For a 64-bit Windows user with Photoshop CS5

Photoshop does not install TWAIN on any 64-bit editions of Windows. The downloadable TWAIN plug-in is 32-bit only.

Alternatively, you may:

- Open Photoshop CS5 in 32-bit mode to enable TWAIN scanning functionality with 32-bit drivers.
- OR
- Use the Windows Image Acquisition (WIA) interface to import from your scanner.

Windows OS directory



Using TWAIN in Photoshop CS5 / CS4 (Mac)

Hints:

To run Photoshop CS5 in 32-bit mode:

1. Quit Photoshop CS5.
2. Navigate to Applications/Adobe Photoshop CS5 folder.
3. Select the Adobe Photoshop CS5 application file.
4. Choose File > Get Info.
5. Select "Open in 32-Bit Mode".
6. Close the Get Info dialog box.
7. Restart Photoshop CS5.

For a MAC OS X user with Photoshop CS5

Download the Photoshop CS5 Optional Plug-ins from:

<http://www.adobe.com/support/downloads/detail.jsp?ftpID=4904>

Installation Instructions:

1. Double-click TWAIN.dmg
2. Copy the TWAIN.plugin to Applications\Adobe Photoshop CS5\Plug-ins\Import-Export
3. Restart Photoshop in 32-bit mode to enable the plug-in.

For a MAC OS X user with Photoshop CS4

Download the Photoshop CS4 Optional plug-ins from:

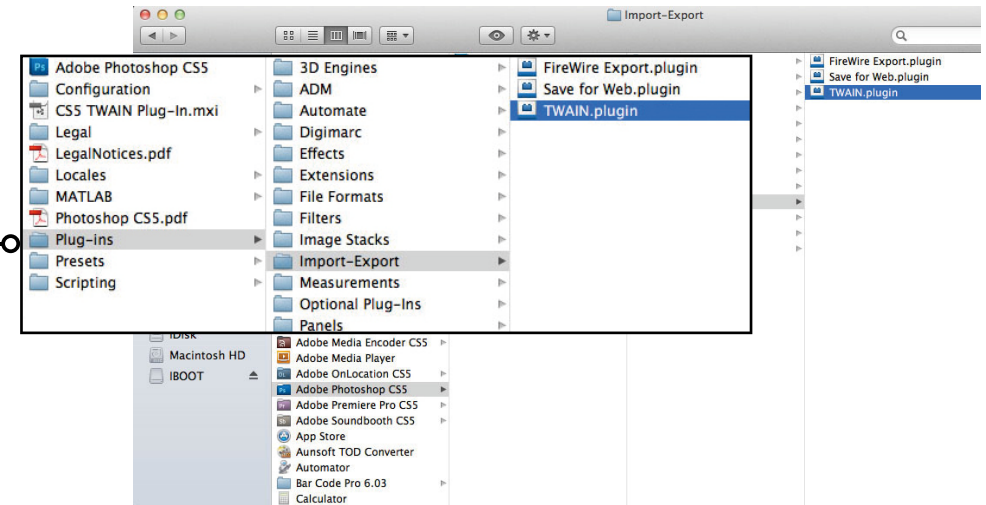
<http://www.adobe.com/support/downloads/detail.jsp?ftpID=4047>

*This download includes plug-ins for Photoshop CS4 English, Spanish and French versions.

Installation Instructions:

1. Quit Photoshop CS4.
2. Copy the TWAIN plug-in from the \<language>\Goodies\Optional plug-ins\Import-Export folder to: Applications\Adobe Photoshop CS4\Plug-ins\Import-Export
3. Restart Photoshop to enable the plug-in.

MAC OS directory



TWAIN Plug-in enabled

